

MARCH 1986

\$2.50

# VETTE VUES MAGAZINE



*The Corvette Enthusiast's Magazine*

Volume Thirteen, Number 8



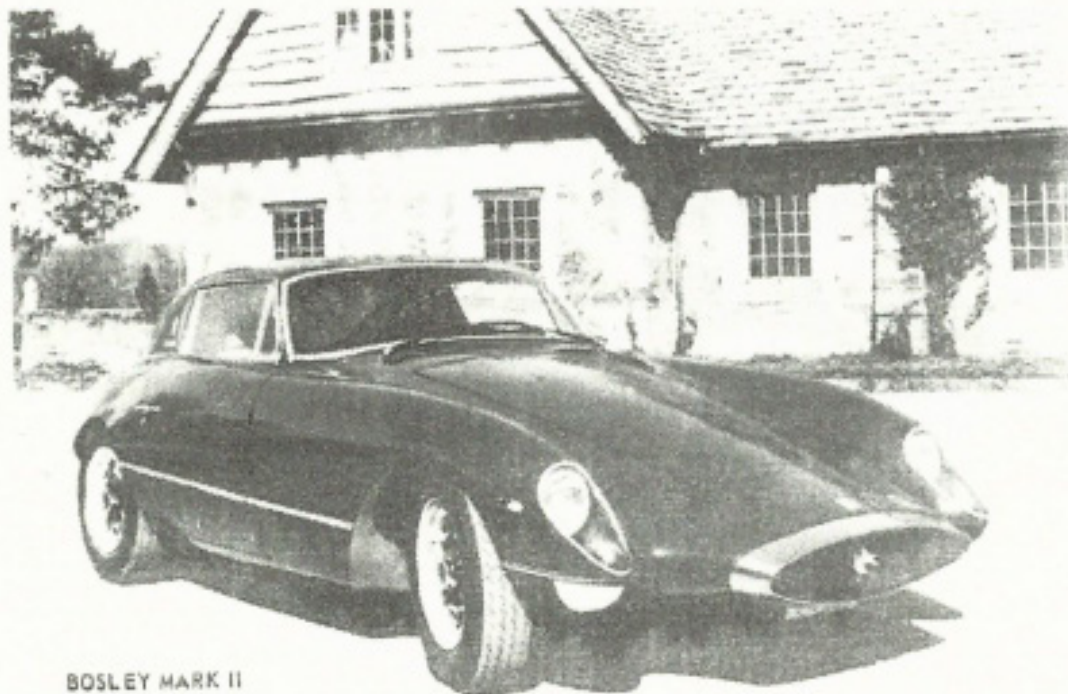
# DAYTONA

---

## BOSLEY INTERSTATE II

---

VETTE VUES FEATURE CAR: A TRUE ONE-OFF SPECIALITY CORVETTE



BOSLEY MARK II  
INTERSTATE

The Bosley Mark II Interstate is a sport car belonging to a class known as the grand touring automobile. It is a unique automobile completely designed and executed by Richard W. Bosley.

Though it has the appearance of a dress car, with its sleek, low-slung body and its many revolutionary accessories, it is, in fact, a car designed for practical roadability. It will transport two people in greater comfort and safety and for longer periods of time than most present day automobiles. As the name Interstate indicates, it is designed for today's new interstate highways, having for this purpose excellent mid-range acceleration, extra gasoline capacity and greater passenger comfort in seating and ventilation. Yet, at the same time, this powerful car is docile enough for enjoyable city driving.

The Bosley Mark II design was conceived by Mr. Bosley over nine (9) years ago. The design was far ahead of its time then and remains so today. Mr. Bosley then developed and executed this design, a project which took most of his spare time during the ensuing nine years. He estimates there is as much as 5500 man hours of labor involved. Nearly all parts, with the exception of engine and chassis (both of which have special modifications) were designed and handcrafted by Mr. Bosley. In order to meet the high standards he had set for the Mark II it was necessary that certain parts be built in Europe, according to his specifications. The unusual oval front bumper and the form gripping seats were built by Reutter of Germany. The side windows and vent glass mechanism were made by Sibona-Bisano of Italy. Otherwise, most of the 1000's of parts were handcrafted in the Bosley's workshop.

**Believe it or not, this IS  
a Corvette  
under the skin!**



(1956 Corvette Chassis)

Even the upswing of the stainless steel exhaust pipes carry through the fine lines. The rear bumpers are of a very strong laminated epoxy which has been chromed and has rubber guard caps added. Trim throughout is of solid brass with heavy chrome plating.

The grill, without any projecting parts, is small and slightly leans forward to offer less air resistance and give a more aggressive look to the car. The complete design is treated as a work of sculpture with every detail carefully planned.

There are many unusual features about the car which add to its appearance, safety and comfort. Across the top of the large rear window is a light bar indicating braking and turning in colors of yellow, orange and red which can be seen by several cars following. The low, clean, sloping hood not only gives a startling and racy appearance but allows for exceptional driver vision. The road is visible three feet in front of the bumper. This remarkable sloping also allows excellent aerodynamic penetration and tends to hold the car to the road at high speeds. The two special seats are of wrap-around shape and the inclination of the backs can be adjusted according to one's wishes. Several items are included to keep the driver stimulated and alert at the wheel during long periods of driving. There is a manual four-wheel transmission and manual foot throttle rather than cruise control. The handsome dash includes a chronometer for checking speeds and determining average speeds. Under the front bumper is a fold-away driving light which allows much greater visibility under adverse conditions. The windshield is clear rather than tinted so there is no reduction of night vision. The large rear window is a handsome smoke colored plexiglass which will hold down interior heat and will not change color values as one looks through it. The passenger is provided with a head rest for resting in a reclined position.

Air horns with a great range will provide adequate warning at high speeds. The powerful Pontiac engine is designed to give strong mid-range acceleration for passing while still allowing a substantial top speed. The headlights are housed in glass farings which blend harmoniously with the sides of the car. Below these, still following the streamlined side of the fender, are incorporated the directional indicators and parking lights.

The interior of the Interstate was also designed by Mr. Bosley and executed by a firm specializing in aircraft interiors. The unique interior in tones of golds and burnt oranges is carefully color coded and provides a pleasant environment for the occupants. The inside roof is covered with an Ivory simili-leather padded with a layer of shockproof foam rubber. The seats are leather covered in a warm orange and the rich gold carpet is of the finest quality wool which has been flameproofed. The door panels and rear compartment are finished in simili-leather in two shades of gold. The dash is covered with a flat black for non-reflective purposes. Instruments are clearly legible and within easy reach of the driver. An unusual safety device which also enhances the ap-

pearance of the dash is a thin oval-shaped bezel which contains red and blue lights telling the driver which units are activated, including the special driving light.

The special inlaid wood steering wheel was made in Italy. Meticulous attention has been given to every detail including such things as the scuff sills on the door entry which are of brushed stainless steel.

Considerable thought and care were given to the planning of interior space so there is ample foot and leg room and space for relaxing in comfort as well as for several pieces of luggage which are placed behind the seats.

The quick change wheels are of light weight magnesium. They have been polished and partially painted as a fine accent to the rest of the body. The tires are of racing quality for greatest reliability. The frame is an especially sturdy box steel with central X member. The unit construction body is of fiber glass reinforced polyester resin.

The Interstate can be serviced anywhere in the country as the chassis is of the proven Corvette type and the engine is a 345 h.p. Pontiac. The rear axle is a live type which incorporates a limited slip differential.

Gasoline capacity is 35 gallons and allows you to travel as you please, stopping when you wish and not just for frequent gas stops. The gas tank is fiber glass which will prevent rust in the gasoline and should not rupture in case of accident.

The Bosley Mark II is the second in a series of automobiles designed and crafted by Mr. Bosley. The first car, the Bosley Mark I, was designed as an endurance race car, having a fiber glass body on a specially built chassis. The original engine was a Cunningham Chrysler with a 5-speed transmission. It was sold in 1957 in the Chicago area. Since then it has had over 100,000 miles put on it, has gone through three engines and is now being restored.

Richard Bosley has long been an automotive enthusiast. He was an early member of the North Eastern Ohio Region of the Sports Car Club of America (SCCA) and a charter member of Ecurie de Sport in Painesville, Ohio. He was one of the originators of the now famous Braille Rallye held annually for blind children. One of the first Jaguars in the Cleveland area was owned by Mr. Bosley in 1952. He officiates at the International Grand Prix in Sebring, Florida, as he has every year since its inception.

Mr. and Mrs. Richard Bosley and son live at 9579 Mentor Avenue, Mentor, Ohio. Mr. Bosley is a graduate of Ohio State University with a degree in horticulture and is now president of Bosley Nurseries, Inc., at the same address. Bosley Nurseries are wholesale growers of landscape plant material which is distributed over a six state area.

# FEATURE CAR

## BOSLEY MARK II ... INTERSTATE

### FACT SHEET INFORMATION

Name ..... Bosley Mark II  
Model ..... Interstate  
Purpose ..... Driving in comfort and safety over the interstate highways and for the aesthetic pleasure of good automotive design.

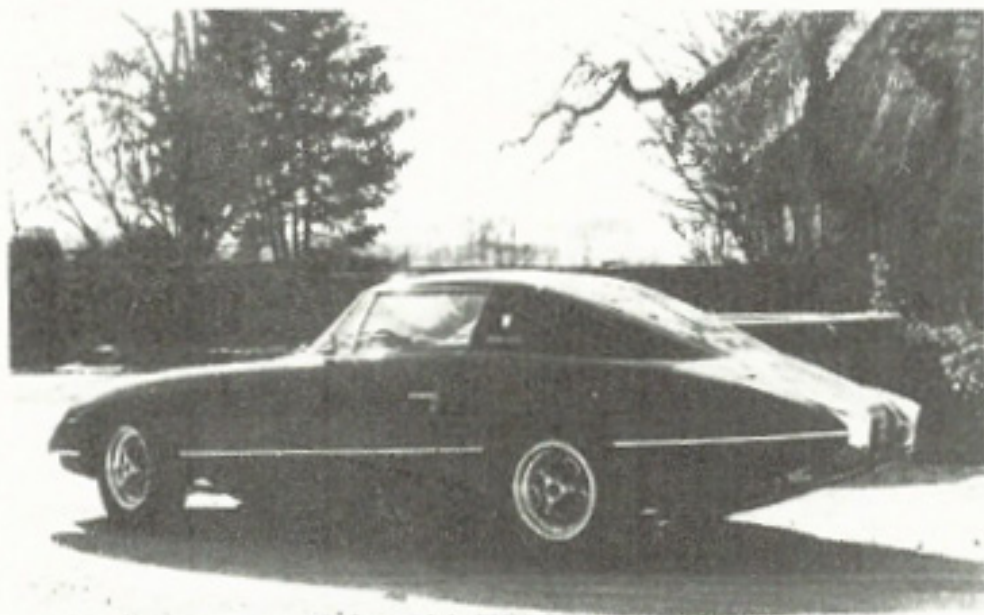
Designer & Builder ..... Richard S. Bosley  
1979 Mentor Avenue  
Mentor, Ohio 44060  
Phone: 216 - 352-3308

Craftsmanship ..... Most of the 2000's of the parts were handcrafted by Mr. Bosley. A few were designed by him and made in Europe.

Safety Devices ..... Seat belts, head rest, reclining seats, tempered side windows, smoke colored rear window, air horns, powerful engine, good visibility front and rear, special interior lighting, added lighting features on front and rear including driving light and signal bar, strengthened frame, unit-construction fiber glass body, anti lift windshield wipers, built in roll bar.

### TECHNICAL SPECIFICATIONS

Gas Tank ..... 25 gallon capacity  
Frame ..... Heavy box steel, X member, rigid  
Tires ..... Special Goodyear high traction 4.50 - 6.70 15  
Wheels ..... Magnesium, center lock  
Exhaust system ..... 2" stainless steel mufflers are full flow fiber glass  
Wheel Base ..... 102"  
Track ..... Front - 57"  
Rear - 50"  
Engine ..... 340 h.p. Pontiac  
Transmission ..... 4 speed manual  
Air Horns ..... Marchal Fulgor  
Headlamps ..... Marchal Optique  
Windshield wipers ..... 2 speed electric anti lift blades.



FOR MORE INFORMATION ON THE BOSLEY MARK II, WRITE RICHARD BOSLEY AT THE ADDRESS SHOWN HERE.

AN INTERESTING NOTE: ALTHOUGH NOT SPECIFICALLY POINTED OUT IN THE TEXT, THE CHASSIS OF THE BOSLEY MARK II IS A 1956 CORVETTE...ONE OF THE 4 FACTORY TEAM CARS ENTERED FOR THE SEBRING RACE.

## BOSLEY PRODUCTS

9579 MENTOR AVE. -  
MENTOR, OHIO 44060 U.S.A.  
PHONE: 216-352-3308